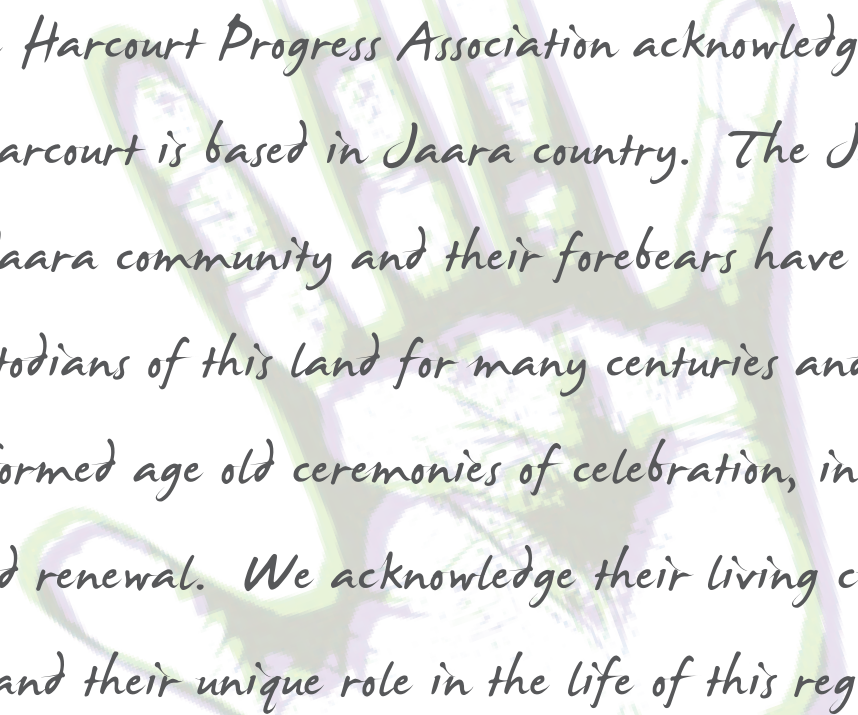




Harcourt  
*A Growing Place*



*Community Plan 2013*



*The Harcourt Progress Association acknowledges that Harcourt is based in Jaara country. The Jaara Jaara community and their forebears have been custodians of this land for many centuries and have performed age old ceremonies of celebration, initiation and renewal. We acknowledge their living culture and their unique role in the life of this region.*





**Harcourt**  
*A Growing Place*

## *Community Plan 2013*



<b>Introducing the Harcourt Community Plan . . . . .</b>	<b>1</b>
<b>The Harcourt Progress Association . . . . .</b>	<b>2</b>
<b>A Little about Harcourt.... . . . .</b>	<b>3</b>
<b>Background to the Community Plan . . . . .</b>	<b>4</b>
<b>The Community Plan Process . . . . .</b>	<b>5</b>
<b>Formation of the Harcourt Progress Association . . . . .</b>	<b>5</b>
<b>Creating our Future: The Vision . . . . .</b>	<b>6</b>
<b>Things we can achieve: The Actions . . . . .</b>	<b>7</b>
<b>Where to now? . . . . .</b>	<b>12</b>
<b>Appendix A: Historical and Demographic Information . . . . .</b>	<b>13</b>
<b>Appendix B: Local Clubs and Groups . . . . .</b>	<b>18</b>
<b>Acknowledgments . . . . .</b>	<b>24</b>

*All photos are from the Harcourt area.*

## INTRODUCING THE HARCOURT COMMUNITY PLAN

What kind of a future do we want for Harcourt?

What opportunities exist to achieve something special in Harcourt?

What are some of the practical improvements we can make in town?

What are some of the problems and issues we can address?

Begun as an initiative of the Mount Alexander Shire Council, an open group of community members has met monthly to consider questions such as these. Since our initial meeting in early 2013, we have put together a plan for Harcourt that combines a vision of our future with a number of specific development opportunities for Harcourt. A draft of the plan was submitted to the community for comment and the feedback we received has been incorporated into the plan.

The plan is not perfect. It is a work in progress and we expect it will be revisited periodically to reflect the changing aspirations and achievements of our community. Nevertheless, the plan serves as:

- A statement about our town and community at this point in time
- A marker against which progress can be measured
- A vehicle for stimulating action and achievement
- A tool for developing grant applications

We believe Harcourt has a bright future and this is reflected in the wealth of possibilities, big and small, contained in this plan. If any of these ideas captures your imagination, please let us know.





## THE HARCOURT PROGRESS ASSOCIATION

The Harcourt Progress Association grew from the same meeting that gave rise to the community plan. At this original meeting and in many discussions since, people have voiced the need for an independent group to promote the interests of Harcourt as a whole by:

- Supporting the work of existing community groups
- Improving communication within the community
- Serving as a vehicle for generating interest and obtaining funding
- Encouraging economic development
- Acting as a conduit for interesting new projects

The Harcourt Progress Association is independent of council, government and specific business interests but fosters good relationships with all parties to work for the benefit of our community.

"I like living in Harcourt because....."  
 We are always working together as a  
 community and we make sure we do are part  
 and help each other.

Comments by students from Harcourt Valley Primary School.



## A LITTLE ABOUT HARCOURT....

Located in the heart of Victoria and nestled at the foot of Mount Alexander, Harcourt and the fertile surrounding valley offers a peaceful rural lifestyle with access to superb road and rail links to Melbourne and to the economic and cultural offerings of vibrant regional towns like Bendigo, Castlemaine and Maldon. With a new school and wonderful sporting and community facilities, Harcourt is a great place to live and raise a family.

Harcourt has a rich horticultural history. The town served as a food bowl to the goldfields and was for many years Australia's premier apple growing region. Harcourt's deep granite soils and guaranteed water supply have allowed it to diversify and it now boasts some excellent wineries, cideries and many gourmet food producers. A beautiful setting combined with excellent infrastructure and transport links points to a bright future for Harcourt in agri-tourism, outdoor recreation and as a provider of high value food products.

Harcourt is the gateway to the Mount Alexander Regional Park. From town, it is possible to walk or cycle to the park but a network of sealed roads means visitors can also drive over and around the mountain. With its magnificent views and dramatic granite outcrops, the mountain provides excellent climbing, a network of walking trails and some of the state's best mountain biking terrain. Mount Alexander is known as Lanjanuc to the local JaaraJaara people and is the location of a sacred ceremonial ground. In the foothills of the mountain, the historic and beautiful Harcourt Oak Forest offers barbeque and picnic facilities and serves as a perfect base for outdoor recreation.



## BACKGROUND TO THE COMMUNITY PLAN

Mount Alexander Shire Council received State Government funding to develop Community Action Plans within the Shire. The Local Community Planning Project is working with nine towns over a three year period to achieve nine community plans. In late 2011, Harcourt was chosen by Council to take part in the community planning project.

Previously, the Harcourt community had come together a number of times to discuss the impact of the bypass, particularly on the local economy. As part of these discussions, the community identified the need for a plan to help secure Harcourt's future sustainability and prosperity. A report was produced called 'Harcourt After the Bypass – A Plan to Secure Harcourt's Future' and Council established a reference group to address issues specific to the bypass raised in this report. Council decided that the broader issue of a Harcourt plan was best addressed through the community planning project and employing a more community directed and led process.

Being  
"I like living in Harcourt because....."

Everyone gets along (there are no fights on the streets)  
It is a small town and there aren't normally traffic jams.  
You can go for a nice walk or meal around town  
and everywhere you go there are smiles everywhere.



## The Community Plan Process

After an initial community profile was completed for Harcourt, Council's Community Planning team set about surveying residents and visitors to sample a broad range of community perspectives and opinions. The Harcourt community survey was conducted with targeted community groups within Harcourt.

111 Harcourt residents participated in the survey. The results revealed a range of issues, concerns and aspirations considered to be of high importance to the Harcourt community. Themes emerging from the feedback included:

- improving existing infrastructure and buildings
- social connections between community groups
- enhancing communications within the community
- managing and maintaining the natural environment
- encouraging business and tourism activities

## Formation of the Harcourt Progress Association

Mount Alexander Shire held two workshops to discuss the community feedback resulting from the survey and identify key themes.

Following these workshops, a group of community members committed to meet regularly and take a lead on community planning within Harcourt. The group decided to operate as a progress association and is now known as the Harcourt Progress Association (HPA).

Since then the HPA has been responsible for developing the plan and encouraging the community to support and take ownership of the identified actions within the plan.



## CREATING OUR FUTURE: THE VISION

### A Hub and Heart

Create a charming rural village atmosphere with good community facilities and services. Develop our excellent transport links to Castlemaine, Bendigo and Melbourne. Make Harcourt a growing town attractive to families in search of a semi-rural lifestyle.

### Harvesting Opportunities

Grow a robust and diverse local economy by supporting local business. Encourage expansion and diversification of agricultural enterprises with focus on value adding, processing opportunities and improved logistics. Develop branding around Home-grown and Handmade in Harcourt. Provide residents with local job and training opportunities.

### Happening Harcourt

Create a vibrant community with events and activities which engage locals and draw tourists to our community. Encourage the development of local sport and cultural activities. Create events which leverage our unique setting (Mount Alexander, Oak Forest) and businesses (wineries, cideries and orchards). Develop branding/reputation around healthy produce and active outdoor recreation including food, wine, fitness and fun. Leverage regional events to draw people to Harcourt.

### Connecting Community

Create a connected community with strong communication so all residents know what is happening in Harcourt. This can be achieved through a community newsletter, websites, blogs and social media and via improved signage, local bulletin boards and a local business and service directory.

### Our Natural Environment

Maintain a healthy natural environment throughout Harcourt through planting, weed clearing and beautification projects. Improve and develop our unique environmental assets including Mount Alexander, the Oak Forest, Barkers Creek and the Barkers Creek Reservoir. Celebrate Harcourt as the gateway to Mount Alexander Regional Park.

"What I love about Harcourt is....."  
The neighbours and people in Harcourt  
have. They are very polite and nice.





## A Hub and Heart

Community members have expressed a desire for spaces, places and services that build a strong heart for the community. As population grows there is a need to create a town centre that allows people to gather and connect in accessible meeting spaces. Having a vibrant town centre means we can strengthen community spirit, create economic opportunities and improve our quality of life.

Objective	Strategy
Create a multi-purpose community hub in central Harcourt.	Investigate establishing a community house. Explore the possibility of purchasing an existing building in Harcourt. Consider expanding the ANA Hall.
Improve and maintain all community facilities.	Document and promote available facilities and resources. Work with appropriate bodies to maintain and improve facilities. Use the primary school facilities and resources as a venue for community and educational activities in Harcourt.
Increase access to sustainable transport options.	Lobby to re-open the railway station and undertake a study to measure those coming through Harcourt who would use the train. Promote and encourage usage of the existing bus service to and from Harcourt and lobby to increase services, including linking buses to train timetables in Castlemaine. Undertake a viability study of a community bus to improve transport options.
Develop infrastructure for hosting events.	Create a permanent performance space in James Park. Investigate regional arts grant to construct this. Investigate facilities required to conduct events at the Harcourt Oak Forest and other external locations.
Improve our Town Centre.	Explore and develop ways to consolidate our town centre. Create a visual statement at the freeway exits and in the town centre to draw people into Harcourt through trees, landscape, sculpture. Something that says "Welcome to Harcourt" and uniquely identifies our town. Improve the facilities in central Harcourt – eg – barbecue, lighting, toilets. Obtain funding to establish an improved playground suitable for a wider range of age groups. Establish a community committee to develop a long term strategy to ensure the viability of the swimming pool. Work with local council to improve the drainage in James Park. Improve accessibility for people with disabilities and parents with prams.
Investigate establishing a Men's Shed.	Establish group, generate interest, apply for funding.

## Harvesting opportunities

We want to encourage new enterprises and activities to Harcourt and support existing businesses by creating a climate conducive to sustainable growth. As a small town, we need to cultivate tourism and support our agriculture based businesses whilst maximizing our natural attractions such as the Mount Alexander Regional Park and Barkers Creek Reservoir. We can do this by marketing ourselves as a centre for gourmet food and produce and for outdoor recreation. This will enable Harcourt to thrive economically and provide local jobs and training opportunities.

### Objective

Promote and support local businesses and attract new business opportunities.

### Strategy

Develop a "support your local business / service" campaign.  
Help establish a business and economic forum.  
Identify and create an appropriate commercial zone.  
Work with Council to develop an economic strategy for Harcourt.  
Consider the rezoning research undertaken by consultants through the Master Plan. Check for duplications in industrial, commercial and retail re-zoning.  
Support the local wine and cider industry.  
Develop a Community Business and Services Directory.

Attract visitors to town.

Develop a tourism map of Harcourt showing local facilities and attractions.  
Promote the town as being family friendly.  
Conduct market research of people visiting Harcourt to see what will encourage them to stay longer and return.

Promote new community events and activities.

Develop and promote a Food and Wine Trail.  
Develop a consistent marketing strategy for all of Harcourt.

Promote outdoor recreation.

Create maps and a resource which provides information on the tracks and trails in the Harcourt area.  
Work to connect walking and bike tracks to the Goldfields /Great Dividing Trail.  
Make Harcourt a destination for road cyclists and host cycling events.  
Work with Rocky Riders (local Mountain Biking Club) and Council to make Harcourt Victoria's premier mountain biking destination.  
Encourage and attract additional outdoor activities including orienteering, rock climbing and cross country.



## Happening Harcourt

We want to develop Harcourt as a vibrant community with a full calendar of diverse events, small and large. We can achieve this by supporting and promoting existing events and working to establish new ones. We need to encourage participation by recognising and supporting volunteers within our community.

### Objective

Attract, recognise and retain volunteers to support community initiatives.

### Strategy

Hold a local volunteer awards event.

Recognise volunteers at the Australia Day celebrations.

Attract and conduct volunteer and community training to be held in Harcourt.

Document, support and sustain existing community events and activities.

Assist with the promotion, development and running of the Applefest including recruiting more volunteers.

Work with Castlemaine State Festival organisers to attract State Festival events to Harcourt.

Engage with Taste of Gold Inc to re-establish a local food and wine trail.

Explore conducting more events.

Work with Council to host events such as cycling, mountain biking, triathlon, climbing, orienteering, bushwalking and fishing.

Support people to become engaged.

Develop community engagement strategies that encourage people to join community groups. i.e. Applefest, Taste of Gold.

Encourage partnerships between existing networks.



## Connecting Community

We can build a more cohesive community through better communication. We want to promote what is happening in our town with regular news and reliable sources of information. We aim to strengthen our relationship with council, government, local business and neighbouring communities.

### Objective

Promote what is happening in Harcourt to residents.

### Strategy

Create, maintain and manage a Harcourt community newsletter and blog.  
Promote Harcourt and Harcourt activities to regional media.

Strengthen local communication channels.

Develop a media forum which includes young residents.  
Develop a more coordinated media approach within Harcourt to build stronger connections.  
Develop a new residents kit that includes information about all services, businesses and tourist attractions in Harcourt.  
Install a larger community notice board.

Document community resources.

Create a comprehensive town map incorporating attractions and businesses.  
Identify all local business services and economic areas.  
Ensure correct street names and roads are clearly labeled on map.

Identify and support activities for young people.

Set up a group to facilitate support for young people and explore opportunities to create activities within Harcourt.  
Consider public transport, local employment and recreational needs of young people.

Local Councillor to be available to talk with Harcourt residents.

Have a listening post at the local shop regularly.  
Local councillor to attend community meetings.

Identify funding opportunities.

Identify and promote possible funding opportunities which benefit community groups within Harcourt.

"If I could change one thing it would be  
to....." NO MORE  
councils because they  
are boring except C.W.A.



## Natural Environment

We want to ensure we leave the legacy of a healthy natural environment through our commitment and action in caring for the environment. We commit to leaving our natural assets in better shape.

### Objective

Improving and protecting local landscapes

### Strategy

Establish a 'friends of' group for the Oak Forest and surrounds and investigate community management option.

Improvement of the area along Barkers Creek to create a walk way.

Promote the protection of the environment on Mount Alexander and in surrounding areas.

Consult with Landcare regarding natural environment works that are taking place in Harcourt.

Clean Barkers Creek to enhance flow of water.

Construct a walking trail around the Barkers Reservoir.

Improve and protect the local landscape in and around Harcourt.





# WHERE TO NOW?

The Harcourt Progress Association has become a member based Incorporated Association to enable it to exist as a legal entity.

The association will continue to hold public meetings to address issues raised within this community plan and to develop strategic and business plans which will enable actions from the plan to be realised.

The group is keen to act as a conduit working to support community groups and members to strengthen community engagement and social connectivity. This can be achieved by improving communication channels, promoting local activities and encouraging cooperation to maximise opportunities for Harcourt. We would like the association to partner with other local stake-holders to raise funds and achieve meaningful outcomes for the community.

With a committed community behind it and new residents keen to get involved, Harcourt's future is very exciting.



"If I could change one thing it would be to....."  
*Nothing  
the pool could open earlier*



# Background



## APPENDIX A: BACKGROUND

### History

Harcourt sits at the foot of Mount Alexander and was originally known by the Jaara Jaara Aboriginal people as Lanjanuc (Leanganook). The first European to climb the peak was Major Thomas Mitchell on 28 September 1836. Mount Alexander was used as a landmark for miners heading towards the goldfields in the 1850s.

The first settler in the area was Dr William Barker who established the Mount Alexander Station in July 1845. Gold was discovered near Harcourt at Specimen Gully on Dr Barkers lease in 1851<sup>1</sup>. Good soils and climate allowed the early settlers in Harcourt to grow fruit and vegetables for the miners.

Historian Howard Carr (2002) notes that: "...miners working their claims within ten kilometres of Harcourt would have numbered over twenty thousand". The township of Harcourt was surveyed in 1853 and some of the earliest families (Eagle and Ely) began to grow apples in 1857<sup>2</sup>.

The main products to come out of Harcourt historically have been apples and granite. The Age Newspaper reports "Harcourt soon became known as one of the state's major apple centres. It also became known as a producer of high quality granite which has been used all over Australia. Granite from Harcourt was used for Parliament House in Canberra, the John Flynn Memorial at Alice Springs and the pedestal of the Burke and Wills statue in Melbourne"<sup>3</sup>.



1 Milford, George, 1995, "Dr William Barker and the Mount Alexander Station, 1845". (no publisher shown)

2 Carr, Howard, 2002, "Bridging the Generations – the story of Harcourt", Self-published, printed by McPhersons Printing Group, Maryborough, Victoria.

3 <http://www.theage.com.au/news/victoria/harcourt/2005/02/17/1108500206512.html>



## APPENDIX A: BACKGROUND - Cont.

### Geography

Harcourt is situated on the Calder Freeway, 30 kilometres south of Bendigo and 122 kilometres north of Melbourne. It is nine kilometres from Castlemaine and is located in the municipality of Mount Alexander.

The township is surrounded by orchards, agriculture, and horticulture. To the east, Mount Alexander dominates the skyline. Barkers Creek Reservoir is located to the north of the town and Barkers Creek runs through Harcourt valley feeding into the Loddon River.

### Economic Factors

The rich granite soils, climate and terrain of the Harcourt region enable the production of many agricultural and horticultural crops. The first apple orchard was planted in 1857 and the region was one of Australia's pre-eminent apple producing areas. Apple production continues with fewer producers and with diversification into apple and pear cider and juices. Home to a growing wine industry, Harcourt boasts a number of vineyards producing varieties including Shiraz, Cabernet Sauvignon, Pinot, Riesling, Chardonnay and Viognier wines. There are currently 28 local businesses operating in the area and in addition to the aforementioned apple, cider and wine production, the area's fertile soil supports the cultivation of other products including cherries, raspberries, apricots, peaches, nectarines, plums, olives, goats' cheeses and proteas. All were impacted by the drought and continue to be affected by climate change conditions. Harcourt still produces high quality granite for domestic and commercial use.

Tourist attractions in the area include the Harcourt Heritage Centre, Skydancers Garden, Gift and Café, a range of vineyards and cideries and the Mount Alexander Regional Park. The Annual Applefest in March also attracts many visitors to the town.

### Harcourt After the Bypass

Most significant for Harcourt has been the Calder Freeway bypass in 2009. This resulted in a reduction of traffic through the town of about 9,000 vehicles per day. The Harcourt community has responded to these changes by working with Council to create a new vision for the centre of Harcourt through the After the Bypass Reference Group.

Early in 2010, Council released an Aquatic Study, which recommended a closure of the Harcourt Outdoor Swimming Pool. This resulted in the reformation of Harcourt 2020 (one of the early groups to work with Council on the town's future after the bypass). Harcourt 2020 successfully saved the pool.

Much of the renewed community energy generated by these challenges is now being focused on developing and implementing this community plan.

"I like living in Harcourt because....."

It is Peacefull and Quiet  
and it Has Lots of Nature



## APPENDIX A: BACKGROUND - Cont.

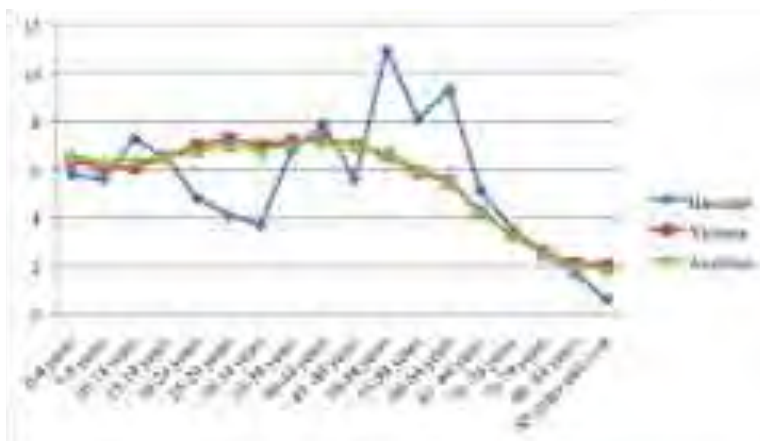
### Demographic Information<sup>1</sup>

Harcourt is now home to an immediate population of 872 people. Given its proximity to Castlemaine, Bendigo and to the Calder Freeway and the ability to expand it's housing stock Harcourt is projected to increase to 1100 residents (500 households) by 2021.

#### Age Profile of Harcourt

Graph - Harcourt age profile shown in percentages compared with Victoria and Australia: Sourced from 2011 census data (ABS)

Harcourt has a median age of 44. Compared to the rest of the Shire, Harcourt's population is slightly younger than average which points to a trend toward people moving away for better services in old age – (13.5% of Harcourt's adults are aged 65-84 as compared to 20.8% for MAS (Mount Alexander Shire) and 17.4% for Regional Victoria). Children aged 0 - 14 years make up 18.4% of the population, compared to 16.3% for MAS.



Current migration trends indicate that almost 18% of the population arrived within the past five years, 66% have lived in Harcourt for more than five years, and the remaining 16%, all of their lives. Only a small proportion of the population of Harcourt was born outside Australia (4.5%), and of those people all are proficient in English.

School attendance shows a slightly higher percentage of the population attending primary school and secondary school, with marginally higher figures than MAS for tertiary attendance. Harcourt Valley Primary School currently has 84 students on the roll. Funding of 1.8 million dollars from the Federal Government in 2009 saw the schools old relocatable buildings replaced with state of the art facilities. The Harcourt and District Playgroup run by the Uniting Church meets on a weekly basis and the Harcourt Pre-School Play Centre provides 3 & 4 year-old kinder services.

Compared to the rest of the Shire, Harcourt is home to a greater number of couples with children – 43.1% in comparison to 36.7% in MAS. This is further indication of Harcourt's younger population.

209 people indicated that they were volunteers though it is not clear whether they volunteered in Harcourt or elsewhere. 17% of volunteers were aged 15 – 34 years of age; 77%, were between 35 – 74 years of age and 4% were over 75 years of age.

In terms of Religion 60.5% of Harcourt residents described themselves as having a faith (Anglican 13.4%, Catholic 12.4%, Uniting Church 12.9% or Churches of Christ 2.3%) while 39.5% stated they had no religion.

<sup>1</sup> Figures from 2011 Census Data.





## APPENDIX A: BACKGROUND - Cont.

### SEIFA (Socio-Economic Indexes for Areas) Level of Disadvantage

Harcourt scores 971 on the SEIFA index of disadvantage meaning that it has a relatively high level of disadvantage - the benchmark score being 1000. By comparison, Mount Alexander Shire scores 981 on the index. 38.2% of households in Harcourt earn over \$1000 per week and 14.5% earn less than \$350 per week (as compared to 17.6% in Regional Victoria).

Unemployment in Harcourt sits at 3.6%. This is below the Victorian state-wide figure of 5.4%. Unemployment in Harcourt has decreased since 2006 when 6.5% of people were unemployed. In Harcourt 55.1% of people are employed full time and 34.4% are employed part time. Of those in employment the great majority work in Castlemaine or Bendigo.

Rental accommodation accounts for 15.2% of the housing market as compared to 24.1% for Regional Victoria. Housing in Harcourt is either fully owned (40.1%) or being purchased with the aid of a mortgage (42.2%). These figures are consistent with the perceived trend towards new arrivals and/or the need to remortgage.



# Local Clubs and Groups



"If I could change one thing it would be to....." Make the shops sell stuff for free

## APPENDIX B: LOCAL CLUBS AND GROUPS

### HARCOURT COMMUNITY GROUPS

	CONTACT NAME	CONTACT DETAILS
<b>HARCOURT CEMETERY TRUST</b> <i>About the community group:</i> Preserving the history of the Harcourt Cemetery.	JAN HULL	5474 2420 5474 8288 (AH)
<b>HARCOURT PROGRESS ASSOCIATION</b> <i>About the community group:</i> The Harcourt Progress Association consists of dedicated and enthusiastic locals who work on a variety of projects to benefit and strengthen the Harcourt community. <i>Meetings are held on the third Wednesday of each month starting at 7.00pm sharp and running until 9.00pm.</i>	DAVID HEATH	0423 416 582
<b>HARCOURT CARPET BOWLING CLUB (WINTER)</b> <i>About the community group:</i> Great club to meet locals in Winter. The Harcourt Carpet Bowling Club meets at the Harcourt Leisure Centre.	KEVIN EARL	5470 5020
<b>HARCOURT BOWLING CLUB</b> <i>About the community group:</i> State-of-the-art greens and top facilities are the scene of many a tournament. New members always welcome. The bowling greens are located in Bagshaw Street Harcourt.	JOHN GRANT	5474 3246 jmgrant47@hotmail.com
<b>HARCOURT LIONS CRICKET CLUB</b> <i>About the community group:</i> The Harcourt Lions Cricket Club has been part of the Harcourt community for 135 years. The club fields 2 senior teams and 2 junior teams and play at the Harcourt Recreation Reserve. <i>Their doors are always open for cricket lovers and they encourage players of all abilities and ages to come and try a game of cricket with the Harcourt Lions.</i>	PETER KEPSNER ROB FISHER	peterkepsner@yahoo.com.au 5447 7558
<b>HARCOURT FOOTBALL/NETBALL CLUB</b> <i>About the community group:</i> The Harcourt Football Netball Club has been part of the Harcourt community for 124 years. The club fields a local football and netball team as well as providing a variety of social and volunteer opportunities.	SCOTT BERRY	0402 363 685



## APPENDIX B: LOCAL CLUBS AND GROUPS - Cont.

### HARCOURT COMMUNITY GROUPS

	CONTACT NAME	CONTACT DETAILS
<b>HARCOURT LEISURE CENTRE AND RECREATION RESERVE</b> <i>About the community group:</i> The Harcourt Recreation Reserve is home to the Harcourt Football Netball Club and the Harcourt Lions Cricket Club The Leisure Centre was opened in 1991 and is a large venue suitable for community functions. The centre is available for hire..	GEORGE MILFORD	5474 2426 georgeamilford@bigpond.com
<b>HARCOURT PONY CLUB</b> <i>About the community group:</i> Warm family atmosphere suited to junior members wanting to improve their horse riding and management skills. We cover a range of disciplines and we are an inclusive pony club focused on good horsemanship. Potential members welcome. Activity days are held on the first Sunday of the month from 9.30am – 3.30pm.	RACHAEL WEBB	5474 2449 birralee198@hotmail.com
<b>HARCOURT RURAL FIRE BRIGADE</b> <i>About the community group:</i> Harcourt Rural Fire Brigade has protected the local community since 1944, and has responded to more than 1,000 incidents throughout those 68 years. The brigade's 49 current members, including 39 operational fire fighters, attend 45 call-outs annually within its allocated 80km2 area.	TYRONE RICE	5479 1233 0409 686 738 tri46068@bigpond.net.au
<b>HARCOURT JUNIOR NETBALL CLUB</b> <i>About the community group:</i> Providing a supportive environment for young people in Harcourt to participate in netball.	TRACEY PAYNE	5474 2872
<b>HARCOURT JUNIOR FOOTBALL CLUB</b> <i>About the community group:</i> Providing a supportive environment for young people in Harcourt to participate in football.	STEVE CUMMINGS	5474 2331



## APPENDIX B: LOCAL CLUBS AND GROUPS - Cont.

### HARCOURT COMMUNITY GROUPS

	CONTACT NAME	CONTACT DETAILS
<b>HARCOURT VALLEY HERITAGE AND TOURIST CENTRE</b> <i>About the community group:</i> Harcourt Heritage Centre Museum is situated at 7 High Street, Harcourt, in the centre of the Harcourt community. The districts or geographical areas covered, within the museum boundaries, are Harcourt, Harcourt North, Barkers Creek, Woodbrook, Ravenswood, Porcupine Hill and Faraday. Principal themes are apple-growing, granite quarries, family history, district schools, military history, forestry, irrigation and the short-lived attempt at sericulture. The Heritage Centre is the custodian of the C H James collection, acts as the local tourist information centre, conducts the annual Applefest Art Show, has a 'third Sunday of the month' programme of tours and talks, offers for sale a number of local history publications and is proud of its continual activities over the last 23 years, all run by local volunteers. <i>The centre is open Wednesdays from 9.00am- 4.00pm.</i>	GEORGE MILFORD (HERITAGE) JOAN LIENHOP (TOURISM)	5474 2426 georgeamilford@bigpond.com 5474 2321 heritage@harcourt.vic.au
<b>HARCOURT DISTRICT FRUIT GROWERS ASSOCIATION</b> <i>About the community group:</i> The Harcourt District Fruit Growers' Association has a world wide reputation for growing and marketing quality, clean fruit, especially apples. Marketed locally and overseas, Harcourt apples are a tribute to modern horticulture methods, optimum soil types and climate.	KATIE FINLAY	0409 706 784 kfinlay@mafg.com.au
<b>COUNTRY WOMEN'S ASSOCIATION - HARCOURT BRANCH</b> <i>About the community group:</i> The CWA is the largest women's organisation in Australia. It's aims are to improve the conditions for country women and children and to try to make life better for women and their families, especially those women living in rural and remote Australia. In addition to this the CWA supports many charities and local community projects. From getting involved in projects, campaigning on issues or becoming part of an interest group, the Harcourt CWA Branch offers a diverse range of opportunities. Local participation can also include fundraising at events.	LYNETTE CARTER	5472 3463



## APPENDIX B: LOCAL CLUBS AND GROUPS - Cont.

### HARCOURT COMMUNITY GROUPS

	CONTACT NAME	CONTACT DETAILS
<b>HARCOURT NORTH-SEDGWICK LANDCARE GROUP</b> <i>About the community group:</i> <p>The North Harcourt-Sedgwick Landcare Group sits astride the main north – south ridge dividing the Loddon and Campaspe catchments.</p> <p>The group has 85 members and sponsors tree planting work, assists landholders to grow their own trees and collects local indigenous seed for revegetation. The group works with "The Tree Project" to co-ordinate seedling orders. In the past 5 years 22,000 seedlings have been delivered to members.</p> <p>The group runs information sessions/field days for landholders on all topics related to landcare.</p> <p>The group also runs a number of social activities to foster networking and shared learning between members.</p> <p>Equipment is also available for use by members. New members are welcome to join the group.</p>	KAROLINE KLEIN	kklein7@bigpond.com
<b>HARCOURT LIONS CLUB</b> <i>About the community group:</i> <p>Lions Clubs are part of community life, in the cities and in the country. Ordinary people doing extraordinary things - supporting people with a disability, community greening, fundraising for worthwhile causes.</p> <p>Lions Australia is part of an international association, filled with people who are joined by the common desire to make their communities better, by using their creativity, enthusiasm and energy.</p> <p>Membership is open to all people of the community.</p>	<b>MENYA WILLIAMS</b> President <b>RAY RICE</b> Secretary	5474 2381  5474 2453  harcourtionsclub@yahoo.com.au

"I like living in Harcourt because....."

It is a nice little town and friendly community with enough houses I have lived here since I was 2 and it is my home.



## APPENDIX B: LOCAL CLUBS AND GROUPS - Cont.

### HARCOURT COMMUNITY GROUPS

	CONTACT NAME	CONTACT DETAILS
<b>HARCOURT PLAYGROUP</b> <i>About the community group:</i> The Harcourt Playgroup is run from the Hall in front of the Harcourt Pre-School on Thursday's from 10.30am – 12.30pm. Weekly activities include indoor and outdoor play. All newcomers are encouraged to attend.	LYNDA	5474 2534
<b>HARCOURT PRE-SCHOOL</b> <i>About the community group:</i> Located at 28 Buckely Street, the Harcourt Pre-school is operated under the umbrella of the YMCA. It offers a 15 hour program for 4-5 year olds and a pre-kinder program for 3 year olds. The Harcourt Pre-school welcomes visits by prospective families.	ANDREA BRASHER	5474 3022 5474 2391 harcourt.kin@kindergarten.vic.gov.au
<b>HARCOURT UNITING CHURCH</b> <i>About the community group:</i> The Harcourt congregation is an accepting, inclusive group offering worship, peace, growth, enrichment and community. Worship service at 9.00 am each Sunday.	MARIE TWYFORD	5474 2739 mltwyford@gmail.com
<b>HARCOURT VALLEY LANDCARE GROUP</b> <i>About the community group:</i> Harcourt Valley Landcare Group is an active community group of volunteers of all ages dedicated to preserving and revitalizing the valley environment. There are lots of opportunities for members to get their hands dirty while cleaning up the local environment. Harcourt Valley Landcare is affiliated with Farm Tree and Landcare Association of Victoria. FTLA is the state-wide 'umbrella group' for all Landcare groups. The group is also enthusiastic supporters of Connecting Country, a Castlemaine-based organisation which provides leadership and advice on all sorts of environmental projects. Meetings are held on the 2nd Thursday of every month and activities are run once a month on the 4th Sunday of the month.	JARROD COOTE President ROBYN MILLER Secretary	0438 069 849 jcoote@mmnet.com.au 0467 670 271
<b>HARCOURT TENNIS CLUB</b> <i>About the community group:</i> Courts located at Harcourt Recreation Reserve. A great club for people that love their tennis.	SHARON BLAKE  FAYE HARDS	5474 2680 micblake@bigpond.net.au 5474 2580

## APPENDIX B: LOCAL CLUBS AND GROUPS - Cont.

### HARCOURT COMMUNITY GROUPS

	CONTACT NAME	CONTACT DETAILS
<b>HARCOURT NORTH TENNIS CLUB</b> <i>About the community group:</i> Courts located at corner of Mclvor and Chaplins Road, North Harcourt.	CHRIS LAVENDER	5474 2196
<b>HARCOURT NORTH COMMUNITY HALL</b>	JANICE DOUGLASS	5439 6438
<b>HARCOURT MARKET</b> <i>About the community group:</i> Harcourt outdoor market runs from 10am until 3pm on the third Sun of the month. On sale is a wonderful array of handmade and locally produced goods ranging from craft to produce and everything in between. There are also activities for children including a jumping castle and free old fashioned activities.	JACQUELINE CUE	0418 355 460 market@harcourt.vic.au

### Acknowledgments

Special thanks go to the following people:

Everyone who attended our community planning meetings, provided feedback or completed the survey.

The community members who have helped establish the Harcourt Progress Association including David Heath, Max Murphy, Annette Smith, Vera Hemkes, Donna McMahon, Craig Watkins, Kelly Aitken, Paul Mizzi, Peter Church, Diane Baig, Ayron Teed, Robyn Miller and Jacqueline Brodie-Hanns.

Staff at Mount Alexander Shire Council and especially Chris Walters and Sharlene Farrugia.

Councillor Tim Barber.

Annette Smith and the Harcourt Valley Primary School community.

Kelly Aitken for establishing and maintaining a Facebook presence and blog.

Drew Henry for the map.

All design & photography produced in Harcourt.

Quotes & hand drawn brochures Harcourt Valley Primary School community.

Jacqueline Cue for her photography - 0418 355 460.

David Jeffries for design, layout and photography - 0414 262 488 - www.pommegraphics.com.au.



